

UVALDE COUNTY, TEXAS

Sur. 213

LEGEND:

- E — OVERHEAD ELECTRIC LINE
- xx — FENCE LINE
- o — SET 5/8" IRON PIN
- ▲ — ANGLE POINT
- — — ORIGINAL SURVEY LINE
- POB POINT OF BEGINNING
- O.P.R. OFFICIAL PUBLIC RECORDS UVALDE COUNTY, TEXAS

PREPARED BY:
 HOWARD SURVEYING
 TBPELS FIRM NO. 10125700
 402 STATE HWY 173 SOUTH
 HONDO, TEXAS 78861
 830-426-4776

PREPARED FOR:
 TRAVIS MAYO
 807 N. GETTY
 UVALDE, TEXAS 78801

SURVEYED ON THE GROUND: SEPTEMBER 14 & NOVEMBER 24, 2021
 DATE PREPARED: DECEMBER 16, 2021

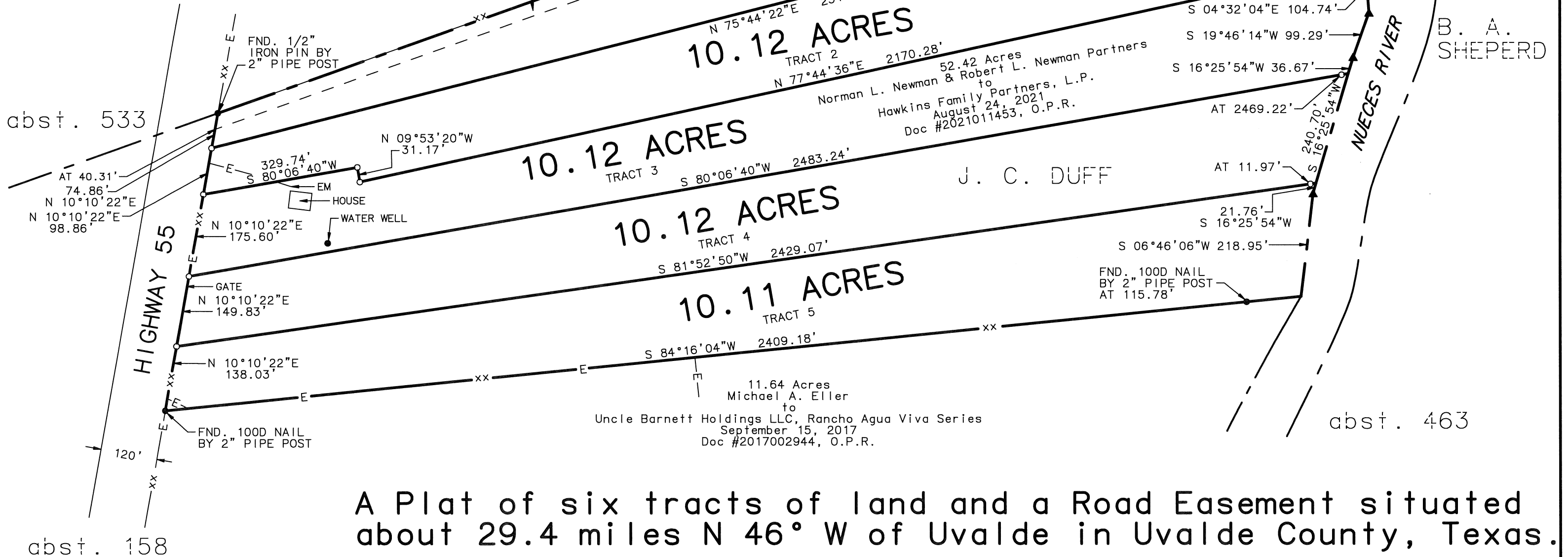
50.13 Acres
 Robert L. Newman, et al
 to
 Dacia RV Adventures Fund II, LLC
 July 24, 2020
 Doc #2020006730, O.P.R.

T. J. WILLIAMS

SCALE 1" = 200'

BEARINGS SHOWN HEREON
 ARE FROM GPS OBSERVATIONS
 TEXAS COORDINATE SYSTEM
 NAD (83).

THIS SURVEY WAS COMPLETED
 WITHOUT THE BENEFIT OF A
 TITLE COMMITMENT.



A Plat of six tracts of land and a Road Easement situated about 29.4 miles N 46° W of Uvalde in Uvalde County, Texas.

UVALDE COUNTY, TEXAS



LEGEND:

- E — OVERHEAD ELECTRIC LINE
- xx — FENCE LINE
- o — SET 5/8" IRON PIN
- ▲ — ANGLE POINT
- — ORIGINAL SURVEY LINE
- POB POINT OF BEGINNING
- O.P.R. OFFICIAL PUBLIC RECORDS UVALDE COUNTY, TEXAS

SCALE 1" = 200'

BEARINGS SHOWN HEREON ARE FROM GPS OBSERVATIONS TEXAS COORDINATE SYSTEM NAD (83).

THIS SURVEY WAS COMPLETED WITHOUT THE BENEFIT OF A TITLE COMMITMENT.

50.13 Acres
Robert L. Newman, et al
to
Dacia RV Adventures Fund II, LLC
July 24, 2020
Doc #202006730, O.P.R.

T. J. WILLIAMS

1.00 ACRE
PARK

ROAD EASEMENT
1.00 ACRE

10.12 ACRES
TRACT 1
THIS DAY SURVEYED

J. C. DUFF

10.12 ACRES
TRACT 2
THIS DAY SURVEYED

52.42 Acres
Norman L. Newman & Robert L. Newman Partners
to
Hawkins Family Partners, L.P.
August 24, 2021
Doc #2021011453, O.P.R.

10.12 ACRES
TRACT 3
THIS DAY SURVEYED

10.12 ACRES
TRACT 4
THIS DAY SURVEYED

HIGHWAY 55

NUECES RIVER

B. A. SHEPERD

Sur. 213

Sur. 211

Sur. 212

abst. 533

abst. 463

abst. 158

PREPARED FOR: TRAVIS MAYO

SURVEYED ON THE GROUND: SEPTEMBER 14 & NOVEMBER 24, 2021

I HEREBY CERTIFY THAT THE FOREGOING PLAT AND ACCOMPANYING FIELD NOTE DESCRIPTIONS WERE PREPARED FROM AN ACTUAL SURVEY PERFORMED ON THE GROUND, UNDER MY SUPERVISION, AND THAT THEY ARE TRUE AND CORRECT TO THE BEST OF MY KNOWLEDGE AND BELIEF. HOWARD SURVEYING ACCEPTS RESPONSIBILITY FOR THIS PLAT ONLY TO THE ORIGINAL CLIENTS FOR WHICH IT WAS PREPARED.

THIS THE 16TH DAY OF DECEMBER 2021.

Keith Howard
KEITH HOWARD, R.P.L.S. NO. 5949
HOWARD SURVEYING
TBPELS FIRM NO. 10125700
402 STATE HWY 173 SOUTH
HONDO, TEXAS 78861
830-426-4776



A Plat of a 1.00 Acre Tract of land and a Road Easement situated about 29.4 miles N 46° W of Uvalde in Uvalde County, Texas.

UVALDE COUNTY, TEXAS



LEGEND:

- E — OVERHEAD ELECTRIC LINE
- xx — FENCE LINE
- o — SET 5/8" IRON PIN
- ▲ — ANGLE POINT
- - - - ORIGINAL SURVEY LINE
- POB POINT OF BEGINNING
- O.P.R. OFFICIAL PUBLIC RECORDS
UVALDE COUNTY, TEXAS

SCALE 1" = 200'

BEARINGS SHOWN HEREON
ARE FROM GPS OBSERVATIONS
TEXAS COORDINATE SYSTEM
NAD (83).

THIS SURVEY WAS COMPLETED
WITHOUT THE BENEFIT OF A
TITLE COMMITMENT.

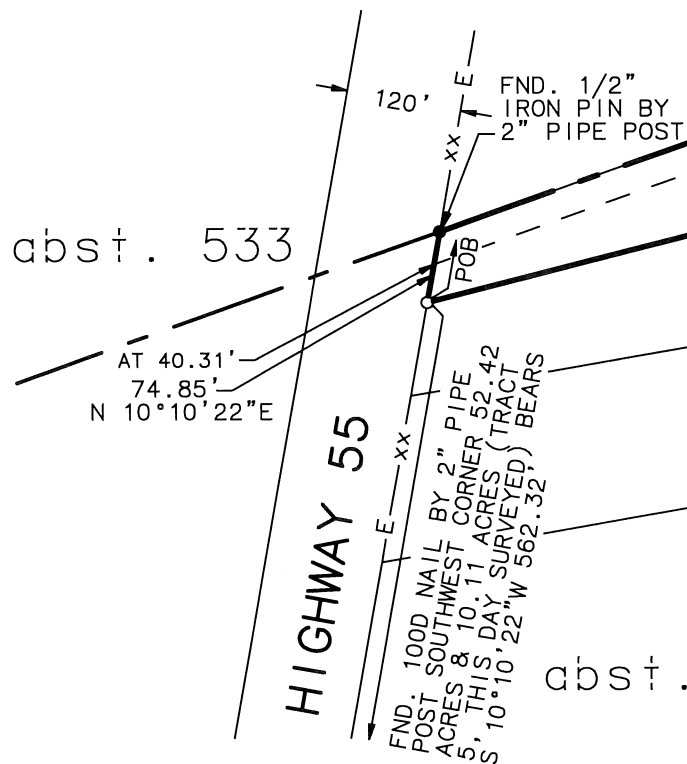
50.13 Acres
Robert L. Newman, et al
to
Dacia RV Adventures Fund II, LLC
July 24, 2020
Doc #2020006730, O.P.R.

T. J. WILLIAMS

10.12 ACRES
TRACT 1

J. C. DUFF

52.42 Acres
Norman L. Newman & Robert L. Newman Partners
to
Hawkins Family Partners, L.P.
August 24, 2021
Doc #2021011453, O.P.R.



ROAD EASEMENT
1.00 ACRE
THIS DAY SURVEYED

10.12 ACRES
TRACT 2
THIS DAY SURVEYED

10.12 ACRES
TRACT 3
THIS DAY SURVEYED

10.12 ACRES
TRACT 4
THIS DAY SURVEYED

1.00 ACRE
PARK
THIS DAY SURVEYED

Sur. 212

Sur. 213

Sur. 211

NUECES RIVER

B. A. SHEPARD

abst. 158

abst. 533

abst. 463

PREPARED FOR: TRAVIS MAYO

SURVEYED ON THE GROUND: SEPTEMBER 14 & NOVEMBER 24, 2021

I HEREBY CERTIFY THAT THE FOREGOING PLAT AND
ACCOMPANYING FIELD NOTE DESCRIPTION WERE
PREPARED FROM AN ACTUAL SURVEY PERFORMED ON
THE GROUND, UNDER MY SUPERVISION, AND THAT
THEY ARE TRUE AND CORRECT TO THE BEST OF MY
KNOWLEDGE AND BELIEF. HOWARD SURVEYING
ACCEPTS RESPONSIBILITY FOR THIS PLAT ONLY TO
THE ORIGINAL CLIENTS FOR WHICH IT WAS PREPARED.

THIS THE 16TH DAY OF DECEMBER 2021.

Keith Howard
KEITH HOWARD, R.P.L.S. NO. 5949
HOWARD SURVEYING
TBPELS FIRM NO. 10125700
402 STATE HWY 173 SOUTH
HONDO, TEXAS 78861
830-426-4776



A Plat of a 10.12 Acre Tract of land (Tract 1)
situated about 29.4 miles N 46° W of Uvalde in
Uvalde County, Texas.

UVALDE COUNTY, TEXAS



LEGEND:

- E — OVERHEAD ELECTRIC LINE
- xx — FENCE LINE
- o — SET 5/8" IRON PIN
- ▲ — ANGLE POINT
- — — ORIGINAL SURVEY LINE
- POB POINT OF BEGINNING
- O.P.R. OFFICIAL PUBLIC RECORDS
UVALDE COUNTY, TEXAS

SCALE 1" = 200'

BEARINGS SHOWN HEREON
ARE FROM GPS OBSERVATIONS
TEXAS COORDINATE SYSTEM
NAD (83).

THIS SURVEY WAS COMPLETED
WITHOUT THE BENEFIT OF A
TITLE COMMITMENT.

50.13 Acres
Robert L. Newman, et al
to
Dacia RV Adventures Fund II, LLC
July 24, 2020
Doc #2020006730, O.P.R.

T. J. WILLIAMS

ROAD EASEMENT
1.00 ACRE
THIS DAY SURVEYED

10.12 ACRES
TRACT 1
THIS DAY SURVEYED

10.12 ACRES
TRACT 2

J. C. DUFF

10.12 ACRES
TRACT 3
THIS DAY SURVEYED

10.12 ACRES
TRACT 4
THIS DAY SURVEYED

52.42 Acres
Norman L. Newman & Robert L. Newman Partners
to
Hawkins Family Partners, L.P.
August 24, 2021
Doc #2021011453, O.P.R.

Sur. 213

Sur. 211

Sur. 212

NUECES RIVER

B. A. SHEPARD

abst. 533

abst. 463

abst. 158

HIGHWAY 55

END: 100D NAIL BY 2" PIPE
POST SOUTHWEST CORNER 52.42
ACRES & 10.11 ACRES (TRACT
5, THIS DAY SURVEYED) BEARS
S 10°10'22"W 463.46'

N 10°10'22"E
98.86'

120'

xx

POB

S 329.74'
80°06'40"W

N 09°53'20"W
31.17'

N 75°44'22"E 2546.54'

S 77°44'36"W 2170.28'

S 04°32'04"E 9.90'

AT 29.98'

S 230°48'00"W
48.00'

1.00 ACRE
PARK
THIS DAY SURVEYED

PREPARED FOR: TRAVIS MAYO

SURVEYED ON THE GROUND: SEPTEMBER 14 & NOVEMBER 24, 2021

I HEREBY CERTIFY THAT THE FOREGOING PLAT AND
ACCOMPANYING FIELD NOTE DESCRIPTION WERE
PREPARED FROM AN ACTUAL SURVEY PERFORMED ON
THE GROUND, UNDER MY SUPERVISION, AND THAT
THEY ARE TRUE AND CORRECT TO THE BEST OF MY
KNOWLEDGE AND BELIEF. HOWARD SURVEYING
ACCEPTS RESPONSIBILITY FOR THIS PLAT ONLY TO
THE ORIGINAL CLIENTS FOR WHICH IT WAS PREPARED.

THIS THE 16TH DAY OF DECEMBER 2021.

Keith Howard
KEITH HOWARD, R.P.L.S. NO. 5949
HOWARD SURVEYING
TBPELS FIRM NO. 10125700
402 STATE HWY 173 SOUTH
HONDO, TEXAS 78861
830-426-4776



A Plat of a 10.12 Acre Tract of land (Tract 2)
situated about 29.4 miles N 46° W of Uvalde in
Uvalde County, Texas.

UVALDE COUNTY, TEXAS

Sur. 213

Sur. 211

Sur. 212

- LEGEND:
- E — OVERHEAD ELECTRIC LINE
 - xx — FENCE LINE
 - o — SET 5/8" IRON PIN
 - ▲ — ANGLE POINT
 - - - - ORIGINAL SURVEY LINE
 - POB POINT OF BEGINNING
 - O.P.R. OFFICIAL PUBLIC RECORDS UVALDE COUNTY, TEXAS

50.13 Acres
Robert L. Newman, et al
to
Dacia RV Adventures Fund II, LLC
July 24, 2020
Doc #2020006730, O.P.R.

T. J. WILLIAMS

SCALE 1" = 200'
BEARINGS SHOWN HEREON ARE FROM GPS OBSERVATIONS TEXAS COORDINATE SYSTEM NAD (83).
THIS SURVEY WAS COMPLETED WITHOUT THE BENEFIT OF A TITLE COMMITMENT.

120'
120'
abst. 533
HIGHWAY 55
FND: 100D NAIL BY 2" PIPE POST SOUTHWEST CORNER 52.42 ACRES & 10.11 ACRES (TRACT 5) THIS DAY SURVEYED BEARS S 10°10'22"W 287.86'

ROAD EASEMENT 1.00 ACRE THIS DAY SURVEYED

10.12 ACRES TRACT 1 THIS DAY SURVEYED

10.12 ACRES TRACT 2 THIS DAY SURVEYED

10.12 ACRES TRACT 3

10.12 ACRES TRACT 4 THIS DAY SURVEYED

10.11 ACRES TRACT 5 THIS DAY SURVEYED

2170.28' 52.42 Acres
Norman L. Newman & Robert L. Newman Partners
to
Hawkins Family Partners, L.P.
August 24, 2021
Doc #2021011453, O.P.R.

J. C. DUFF

AT 2140.30'
S 04°32'04"E 104.74'
S 19°46'14"W 99.29'
S 16°25'54"W 36.67'
AT 14.02'

NUECES RIVER

B. A. SHEPERD

abst. 463

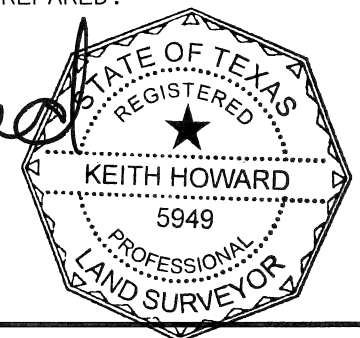
abst. 158

PREPARED FOR: TRAVIS MAYO
SURVEYED ON THE GROUND: SEPTEMBER 14 & NOVEMBER 24, 2021

I HEREBY CERTIFY THAT THE FOREGOING PLAT AND ACCOMPANYING FIELD NOTE DESCRIPTION WERE PREPARED FROM AN ACTUAL SURVEY PERFORMED ON THE GROUND, UNDER MY SUPERVISION, AND THAT THEY ARE TRUE AND CORRECT TO THE BEST OF MY KNOWLEDGE AND BELIEF. HOWARD SURVEYING ACCEPTS RESPONSIBILITY FOR THIS PLAT ONLY TO THE ORIGINAL CLIENTS FOR WHICH IT WAS PREPARED.

THIS THE 16TH DAY OF DECEMBER 2021.

Keith Howard
KEITH HOWARD, R.P.L.S. NO. 5949
HOWARD SURVEYING
TBPELS FIRM NO. 10125700
402 STATE HWY 173 SOUTH
HONDO, TEXAS 78861
830-426-4776



A Plat of a 10.12 Acre Tract of land (Tract 3) situated about 29.4 miles N 46° W of Uvalde in Uvalde County, Texas.

UVALDE COUNTY, TEXAS

Sur. 213

Sur. 212

Sur. 211

50.13 Acres
Robert L. Newman, et al
to
Dacia RV Adventures Fund II, LLC
July 24, 2020
Doc #2020006730, O.P.R.

T. J. WILLIAMS

10.12 ACRES
TRACT 1
THIS DAY SURVEYED

10.12 ACRES
TRACT 2
THIS DAY SURVEYED

52.42 Acres
Norman L. Newman & Robert L. Newman Partners
to
Hawkins Family Partners, L.P.
August 24, 2021
Doc #2021011453, O.P.R.

10.12 ACRES
TRACT 3
THIS DAY SURVEYED

10.12 ACRES
TRACT 4

10.11 ACRES
TRACT 5
THIS DAY SURVEYED

J. C. DUFF

11.64 Acres
Michael A. Eller
to
Uncle Barnett Holdings LLC, Rancho Agua Viva Series
September 15, 2017
Doc #2017002944, O.P.R.

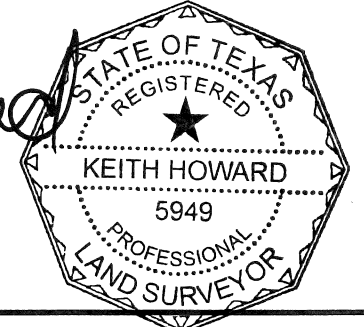
B. A. SHEPARD

abst. 463

I HEREBY CERTIFY THAT THE FOREGOING PLAT AND ACCOMPANYING FIELD NOTE DESCRIPTION WERE PREPARED FROM AN ACTUAL SURVEY PERFORMED ON THE GROUND, UNDER MY SUPERVISION, AND THAT THEY ARE TRUE AND CORRECT TO THE BEST OF MY KNOWLEDGE AND BELIEF. HOWARD SURVEYING ACCEPTS RESPONSIBILITY FOR THIS PLAT ONLY TO THE ORIGINAL CLIENTS FOR WHICH IT WAS PREPARED.

THIS THE 16TH DAY OF DECEMBER 2021.

Keith Howard
KEITH HOWARD, R.P.L.S. NO. 5949
HOWARD SURVEYING
TBPELS FIRM NO. 10125700
402 STATE HWY 173 SOUTH
HONDO, TEXAS 78861
830-426-4776



PREPARED FOR: TRAVIS MAYO
SURVEYED ON THE GROUND: SEPTEMBER 14 & NOVEMBER 24, 2021

- LEGEND:
- E — OVERHEAD ELECTRIC LINE
 - xx — FENCE LINE
 - SET 5/8" IRON PIN
 - ▲ ANGLE POINT
 - - - ORIGINAL SURVEY LINE
 - POB POINT OF BEGINNING
 - O.P.R. OFFICIAL PUBLIC RECORDS
UVALDE COUNTY, TEXAS

THIS SURVEY WAS COMPLETED WITHOUT THE BENEFIT OF A TITLE COMMITMENT.

SCALE 1" = 200'

BEARINGS SHOWN HEREON ARE FROM GPS OBSERVATIONS TEXAS COORDINATE SYSTEM NAD (83).

abst. 533

HIGHWAY 55

GATE
N 10°10'22"E
149.83'

S 10°10'22"W
138.03'

FND. 100D NAIL
BY 2" PIPE POST

120'

abst. 158

A Plat of a 10.12 Acre Tract of land (Tract 4) situated about 29.4 miles N 46° W of Uvalde in Uvalde County, Texas.

UVALDE COUNTY, TEXAS

Sur. 213

Sur. 212

Sur. 211

50.13 Acres
Robert L. Newman, et al
to
Dacia RV Adventures Fund II, LLC
July 24, 2020
Doc #2020006730, O.P.R.

T. J. WILLIAMS

10.12 ACRES
TRACT 1
THIS DAY SURVEYED

10.12 ACRES
TRACT 2
THIS DAY SURVEYED

52.42 Acres
Norman L. Newman & Robert L. Newman Partners
to
Hawkins Family Partners, L.P.
August 24, 2021
Doc #2021011453, O.P.R.

10.12 ACRES
TRACT 3
THIS DAY SURVEYED

10.12 ACRES
TRACT 4
THIS DAY SURVEYED

J. C. DUFF

10.11 ACRES
TRACT 5

11.64 Acres
Michael A. Eller
to
Uncle Barnett Holdings LLC, Rancho Agua Viva Series
September 15, 2017
Doc #2017002944, O.P.R.

B. A. SHEPERD

- LEGEND:
- E — OVERHEAD ELECTRIC LINE
 - xx — FENCE LINE
 - SET 5/8" IRON PIN
 - ▲ ANGLE POINT
 - - - ORIGINAL SURVEY LINE
 - POB POINT OF BEGINNING
 - O.P.R. OFFICIAL PUBLIC RECORDS
UVALDE COUNTY, TEXAS

THIS SURVEY WAS COMPLETED
WITHOUT THE BENEFIT OF A
TITLE COMMITMENT.

SCALE 1" = 200'

BEARINGS SHOWN HEREON
ARE FROM GPS OBSERVATIONS
TEXAS COORDINATE SYSTEM
NAD (83).

abst. 533

HIGHWAY 55

NUECES RIVER

abst. 463

abst. 158

PREPARED FOR: TRAVIS MAYO

SURVEYED ON THE GROUND: SEPTEMBER 14 & NOVEMBER 24, 2021

I HEREBY CERTIFY THAT THE FOREGOING PLAT AND
ACCOMPANYING FIELD NOTE DESCRIPTION WERE
PREPARED FROM AN ACTUAL SURVEY PERFORMED ON
THE GROUND, UNDER MY SUPERVISION, AND THAT
THEY ARE TRUE AND CORRECT TO THE BEST OF MY
KNOWLEDGE AND BELIEF. HOWARD SURVEYING
ACCEPTS RESPONSIBILITY FOR THIS PLAT ONLY TO
THE ORIGINAL CLIENTS FOR WHICH IT WAS PREPARED.

THIS THE 16TH DAY OF DECEMBER 2021.

Keith Howard
KEITH HOWARD, R.P.E.S. NO. 5949
HOWARD SURVEYING
TBPELS FIRM NO. 10125700
402 STATE HWY 173 SOUTH
HONDO, TEXAS 78861
830-426-4776



A Plat of a 10.11 Acre Tract of land (Tract 5)
situated about 29.4 miles N 46° W of Uvalde in
Uvalde County, Texas.