

Sur. 223

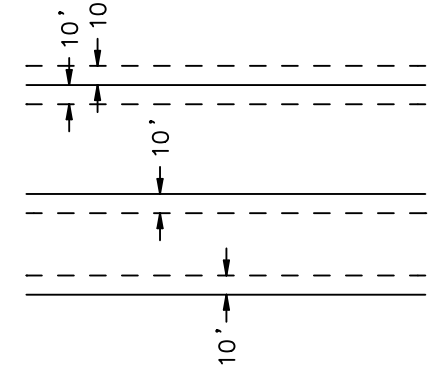
- LEGEND:
- E OVERHEAD ELECTRIC LINE
  - xx FENCE LINE
  - ORIGINAL SURVEY LINE
  - - - COUNTY LINE
  - FND. 100D NAIL UNLESS OTHERWISE DENOTED
  - O.P.R. OFFICIAL PUBLIC RECORDS REAL COUNTY, TEXAS



SCALE 1" = 100'

BEARINGS SHOWN HEREON ARE GEODETIC FROM GPS OBSERVATIONS.

10-FOOT UTILITY EASEMENT ALONG SIDE LOT LINES



4.43 Acres  
Daniel K. Gray, et ux  
to  
Pizo Mystic River, LLC  
September 30, 2022  
Vol. 105, Pg. 9058, O.P.R.

66.939 Acres  
Joanne Cooksey Friend  
to  
Suzanne Friend Johnston  
October 19, 2007  
Vol. 12, Pg. 381, O.P.R.

66.939 Acres  
Joanne Cooksey Friend  
to  
Suzanne Friend Johnston  
October 19, 2007  
Vol. 12, Pg. 381, O.P.R.

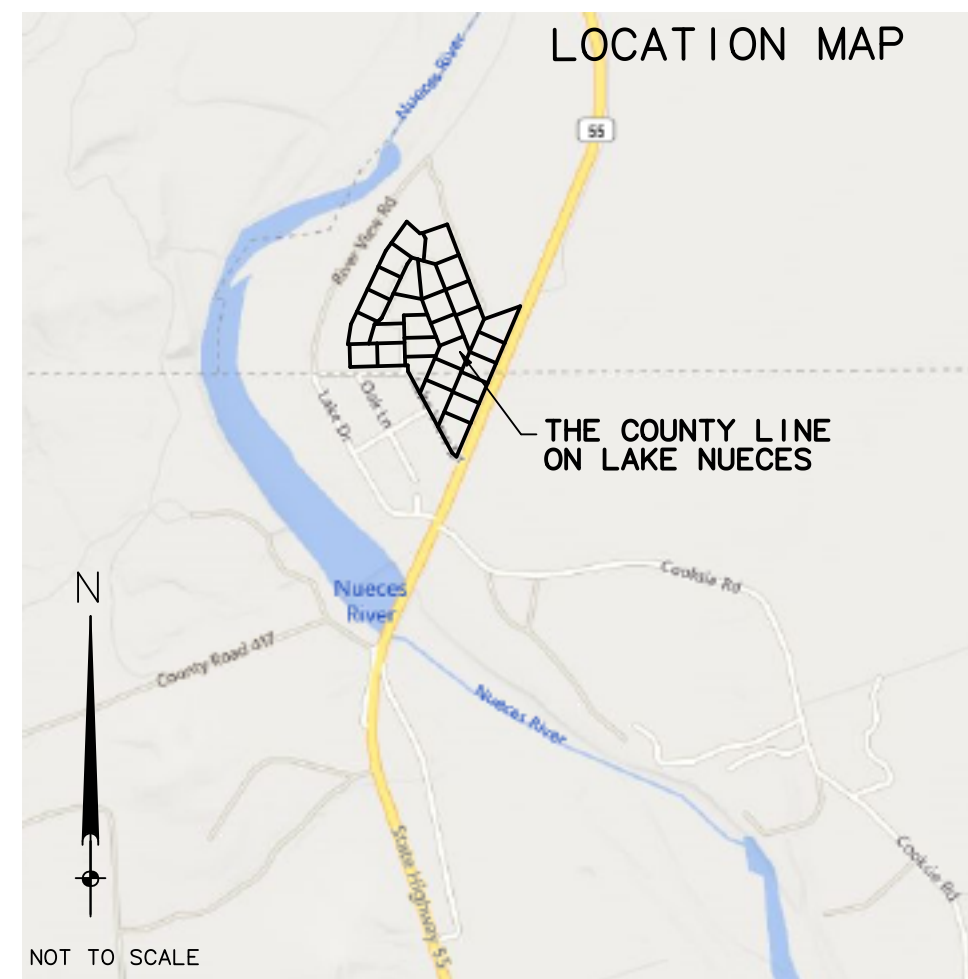
FND. 1/2" IRON PIN BY 6" CEDAR POST

Sur. 219



abst. 254

REAL COUNTY UVALDE COUNTY



PREPARED BY:  
HOWARD SURVEYING  
TBPELS FIRM NO. 10125700  
402 STATE HWY 173 SOUTH  
HONDO, TEXAS 78861  
830-426-4776

PREPARED FOR:  
MAYJACK HOLDINGS  
731 STUDER STREET  
UVALDE, TEXAS 78801

29 LOTS TOTAL  
1.00 ACRE - 1.55 ACRE

SURVEYED ON THE GROUND: NOVEMBER 11, 2022  
AND JANUARY 19, MAY 19, & JULY 20, 2023

DATE PREPARED: OCTOBER 23, 2023